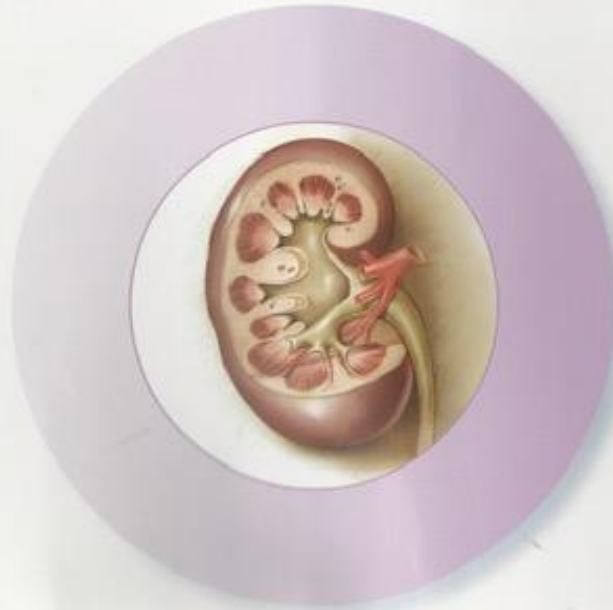




Secondary hyperparathyroidism (SHPT):

A disease that
impacts your
whole body





SHPT

is caused by chronic kidney disease (CKD)

Kidneys perform many functions

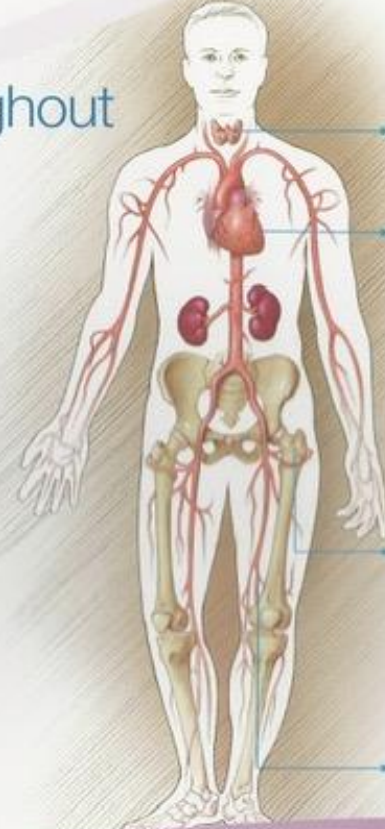
- Filter waste from blood
- Keep bones strong
- Make active vitamin D, which controls parathyroid hormone (PTH) levels
 - PTH helps balance phosphorus and calcium in your body

CKD keeps your body from making enough active vitamin D. When active vitamin D levels are low, you can develop SHPT and increased levels of PTH.

It is important that your SHPT be controlled.

SHPT has effects throughout your body

It is important that your SHPT be treated.



SHPT leads to enlarged parathyroid glands.



SHPT can cause heart disease.



SHPT can cause bones to become brittle and break.

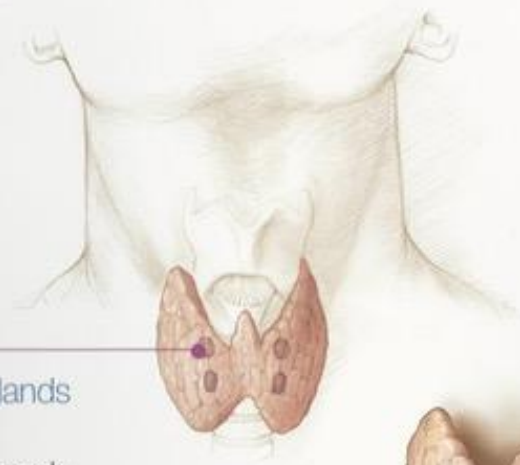


SHPT can cause blood vessels to harden.

Parathyroid glands and **SHPT**

Healthy parathyroid glands

- Make PTH
- Control how much PTH is in your body



In uncontrolled **SHPT**

- Parathyroid glands can be affected by hyperplasia, which means they can become permanently enlarged
- Surgery may be required to remove one or more of the parathyroid glands



It is important that your SHPT be controlled.

SHPT

can cause bone disease



Healthy bone

- Is strong enough to support and protect the body and its internal organs



Bone in SHPT

- Uncontrolled SHPT causes bone pain and weak bones that can become brittle or break

It is important that your SHPT be controlled.

SHPT

can cause heart disease



Healthy heart

- Pumps blood through the body



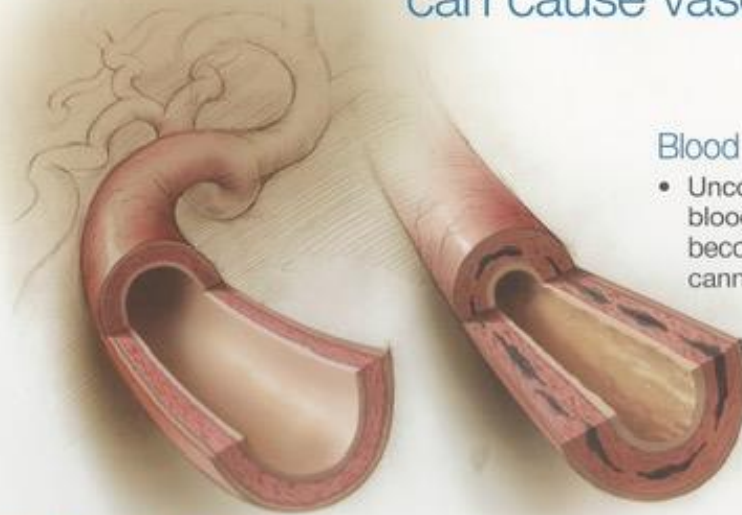
Heart in SHPT

- Uncontrolled SHPT can cause the heart to work harder and become enlarged, as well as other heart problems such as heart failure

It is important that your SHPT be controlled.

SHPT

can cause vascular disease



Blood vessel in SHPT

- Uncontrolled SHPT can cause blood vessels to harden and become rough inside so blood cannot flow properly

Healthy blood vessel

- Carries blood to and from the heart
- Healthy blood vessels are smooth and flexible

It is important that your SHPT be controlled.